



**STUD TRACK
& CEILING**
SUPPLIES



LUXE CLAD A1®
NON-COMBUSTIBLE SOLID ALUMINIUM PANEL



THE CONTRACTORS CHOICE



Luxe Clad A1 Façade Systems

Full suite of extensively tested and accredited systems.

- Fully tested A1 fire-rated
- No minimum order quantities
- UK stock for fast turnaround
- NBS Source listed



0121 720 0694



SALES@STUDANDTRACK.CO.UK





**STUD TRACK
& CEILING**
SUPPLIES

OVERVIEW

STCS is pleased to present what is arguably the most thoroughly tested and accredited portfolio of A1 fire-rated façade systems in the UK.

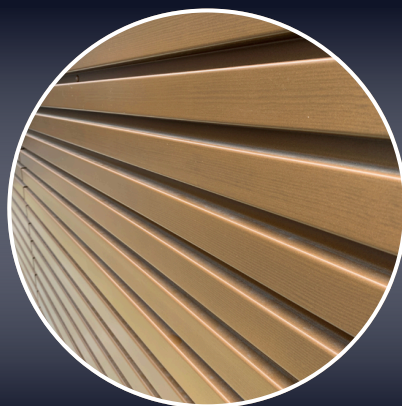
In partnership with Luxe Clad, we offer an extensive and fully tested suite of systems, with additional options forthcoming.

With a material stock holding located in the UK, we provide competitive rates and rapid turnaround times, while also addressing the all too often issues related to minimum order quantities.

To back up the offering, a comprehensive pool of supporting data and typical construction details are ready and waiting to send on request. Every system is accessible on NBS source to ease the pain of the often-arduous specification process.

Furthermore, we are fortunate to have our own in-house technical department, which enables us to go above and beyond in turning design concepts to reality.

The remainder of this brochure is intended to give you an overview of each system. Should you wish to create your own project or client specific system utilising the same A1 materials, we are only too happy to oblige.



LUXE CLAD A1 FAÇADE SYSTEMS

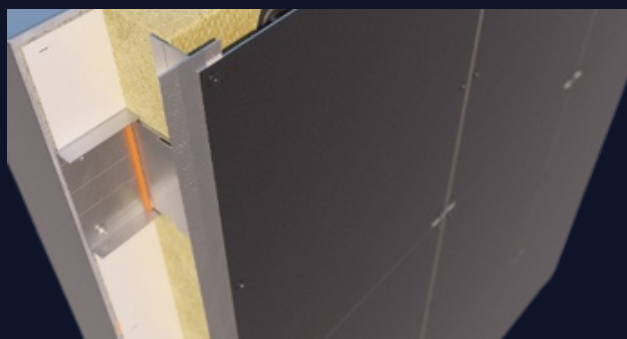
LUXE CLAD A1 TFP SYSTEM – THROUGH FIX PANEL



The most cost-effective system within the range. TFC is a simple flat through-fix panelised rainscreen façade supported by a typical vertical or horizontal Helping Hand framing system.

Key attributes:

- Most cost-effective solution
- Available in 2mm and 3mm gauge
- Able to be installed in any orientation
- CWCT tested
- UL Accreditation
- EPD Certification
- A1 Fire rated with EN13501-1 certification
- NBS Source ready



LUXE CLAD A1 DFC SYSTEM – DISCREET FIX CASSETTE



In contrast to TFP, DFC is a discreet-fix cassette panel designed to provide high performance, aesthetic appeal, and value. The panels are securely fixed within a shadow gap (typically 22mm), effectively concealing visible fixings. Similar to TFP, the supporting structure consists of a straightforward vertical or horizontal Helping Hand frame.

Key attributes:

- Cost reduction compared to other types of cassette system
- Available in 2mm and 3mm gauge
- Suitable for portrait, landscape or soffit applications
- CWCT tested
- UL Accreditation
- EPD Certification
- A1 Fire rated with EN13501-1 certification
- NBS Source ready



LUXE CLAD A1 FAÇADE SYSTEMS

LUXE CLAD A1 SFC – SECRET FIX CASSETTE



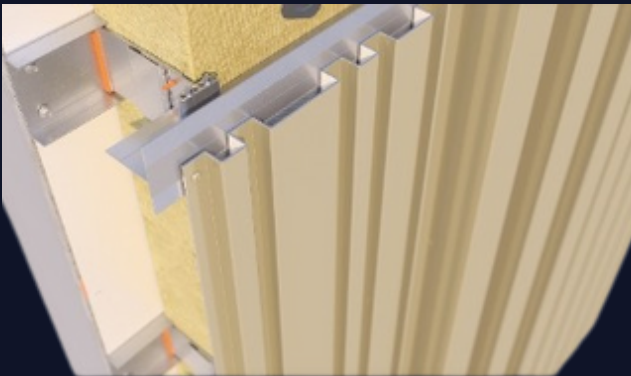
When a façade without visible fixings is demanded, a sensible solution is to use a secret-fix or 'hook-on' panel. As opposed to visible direct fixing through the panel and into the structure, SFC has its very own product-specific Helping Hand framing system. The framing is still simple to install but incorporates a hooked mullion which engages with the back of the panel, thus eliminating sometimes perceived unsightly panel fixings.

Key attributes:

- No visible fixings
- Unique framing system
- Available in 2mm and 3mm gauge
- CWCT tested
- UL Accreditation
- EPD Certification
- A1 Fire rated with EN13501-1 certification
- NBS Source ready



LUXE CLAD A1 CS – CASTELLATED SYSTEM



Castellated panels are becoming increasingly popular. To address this trend, the CS system is available. Like DFC, this is a discreet-fix panel however it can be square or triangularly profiled to meet specific project requirements in terms of depth and spacing. The CS system allows project designers flexibility in panel shape and design while ensuring a practical end product for installers.

Key attributes:

- Installer and designer friendly
- Available in 1.5mm, 2mm and 3mm gauge
- CWCT test pending
- UL Accreditation pending
- EPD Certification
- A1 Fire rated with EN13501-1 certification
- NBS Source ready



LUXE CLAD A1 FAÇADE SYSTEMS

LUXE CLAD A1 IPP – INTERLOCKING PRESSED PLANK

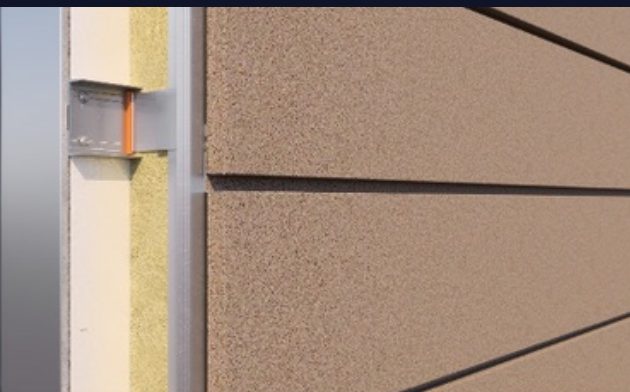


A secret-fix pressed plank may not seem revolutionary, but IPP stands out. It offers an A1 fire rating and is one of the few tested and accredited systems available. This cost-effective solution is ideal for wall cladding or soffit panels without compromising on quality.

Key attributes:

- Soffit and wall profile
- Variable shadow gaps
- Ideal alternative to timber cladding in a woodgrain finish
- Available in 1.5mm, 2mm and 3mm gauge
- CWCT tested
- UL Accreditation
- EPD Certification
- A1 Fire rated with EN13501-1 certification
- NBS Source ready

LUXE CLAD A1 PCP – PRESSED CLIP PLANK



PCP takes planking profiles further. It uses a secret-fixed method like the IPP system but instead uses an extruded aluminium clip for structure engagement. As an open jointed system, it allows back ventilation, making PCP a true rainscreen. Horizontal installation is straightforward, starting from the bottom. PCP offers innovative design and aesthetics, making it an ideal solution.

Key attributes:

- Innovative method of attachment
- Open jointed for background ventilation
- Installs bottom to top (horizontal applications)
- Available in 1.5mm, 2mm and 3mm gauge
- CWCT tested
- UL Accreditation
- EPD Certification
- A1 Fire rated with EN13501-1 certification
- NBS Source ready

LUXE CLAD A1 FAÇADE SYSTEMS

LUXE CLAD A1 SPANDREL PANELS FS & SS – FLAT & STEPPED SPANDREL



Glazed in spandrel panels are nothing new, but A1 fire rated ones are! To compliment our aluminium window, door, and curtain walling portfolio, we are pleased to offer one of the only A1 non-combustible panels on the market. Our panels can be flat or stepped to improve thermal performance.

Key attributes:

- Glazed in windows, doors, and curtain walling for seamless integration
- Available in any thickness
- UL Accreditation
- EPD Certification
- A1 Fire rated with EN13501-1 certification
- NBS Source ready

GET IN TOUCH

Email: sales@studandtrack.co.uk

Website: www.studandtrack.co.uk

Telephone: [0121 720 0694](tel:01217200694)

Stud Track and Ceiling Supplies LTD

UNIT G14
PARK HOUSE
BRISTOL ROAD SOUTH
RUBERY
REDNAL
B45 9AH

Company Reg: 07037699



**STUD TRACK
& CEILING**
SUPPLIES